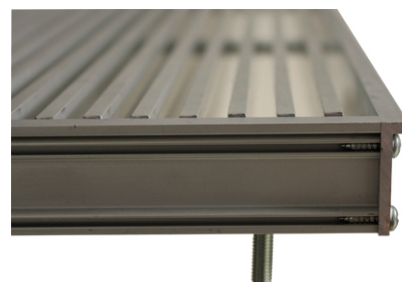
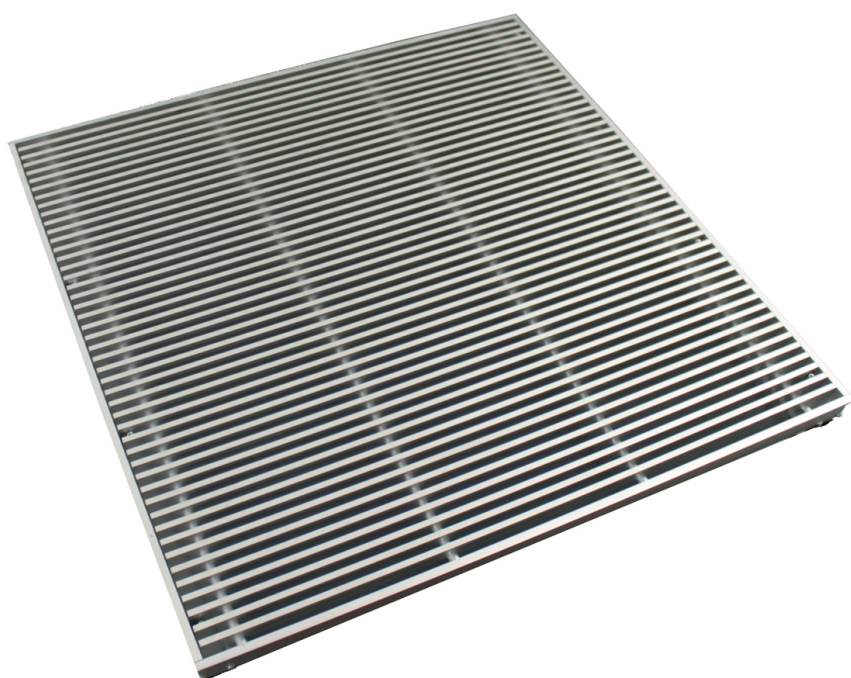


- Floor grilles
- Aluminium
- Anodized natural finish
- Fixed blades 15°



Floor grilles for technical floor type ALG-TF-0

Aluminium grilles for technical floors with fixed blades and removable inner part. Standard delivered with overall dimensions of 599 x 599 mm and floorthickness adjustable from 35 mm to 50 mm

Brand

- Cairox

Application

- Grilles **ALG-TF** are used for air supply and air exhaust in ventilation and air conditioning systems. To lay in technical floor

Material

- Aluminium grille with aluminium frame

Colour

- Natural aluminium finish
- Other colours available upon request

Composition

- Frame and blades made of aluminium
- Support frame made of aluminium
- Support screws to set the height of the grille
- Blade pitch of 12,5mm

Mounting

- To be placed in between floor tiles into the floor structure or on support feet

Accessories

- Volume control damper available upon request

Other available products

- Grille **ALG-TF-15** with 15° deflection

Order Example

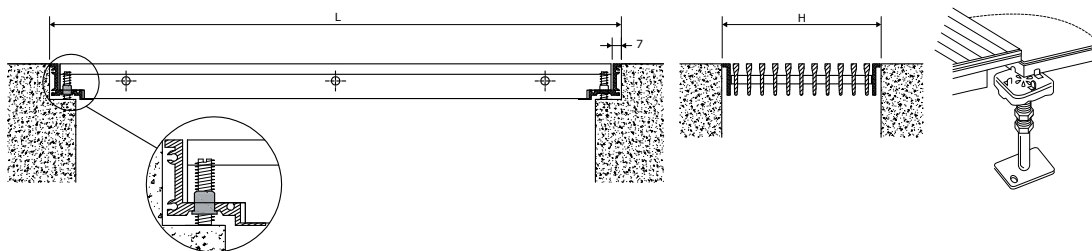
■ **ALG-TF-0 , 600 X 600**

Explanation

ALG-TF-0 = Grille type

600 = Length

600 = Height



Quick selection			
	ALG-TF-0		600 x 600
Q	Ak		0.1602
	Vk		0.5
300	Y0,25		1.2
	Ps		0
	Lw(A)		<20
	Vk		0.7
400	Y0,25		1.6
	Ps		0
	Lw(A)		<20
	Vk		1
600	Y0,25		2.4
	Ps		1
	Lw(A)		<20
	Vk		1.4
800	Y0,25		3.2
	Ps		1
	Lw(A)		<20
	Vk		1.7
1000	Y0,25		4
	Ps		2
	Lw(A)		<20
	Vk		3.5
2000	Y0,25		7.9
	Ps		7
	Lw(A)		33
	Vk		5.2
3000	Y0,25		11.9
	Ps		16
	Lw(A)		43
	Vk		6.9
4000	Y0,25		15.8
	Ps		28
	Lw(A)		51

Symbols and specifications

- LxH = Width L and height H in mm
- Q = Air volume in m³/h
- Ak = Effective surface (free area) in m²
- Vk = Average effective velocity through the grille in m/s
- Y0,25 = Vertical throw in m at an end velocity Vt of 0.25 m/s
- Ps = Static pressure loss in Pa
- Lw(A) = Acoustic power in dB(A)

- The values are given for isothermal supply air.
- The pressure losses Ps are given for grilles without damper or with fully opened damper.
- The acoustic powers Lw(A) are given for grilles without damper or with fully opened damper without room attenuation. Acoustic powers below 20dB(A) are mentioned as "<20" in the tables.
- For all other special requirements, please contact our engineering office.

Placement instruction

